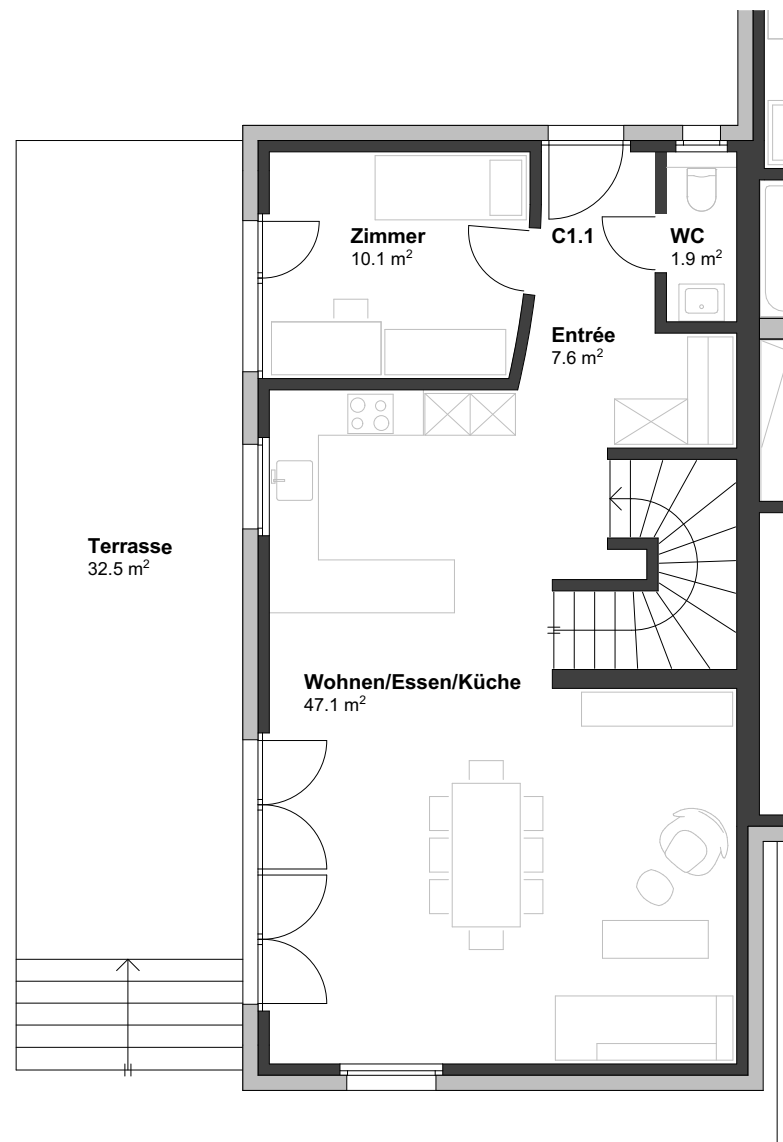
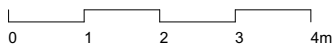


GRUNDSTRASSE 46
EFH ERDGESCHOSS

| | |
|--------------|---------------------|
| EFH Süd Nr. | C1.1 |
| Zimmer | 5 1/2 |
| Wohnfläche | 140.0m ² |
| Terrasse | 32.5m ² |
| Gartenanteil | 468.5m ² |



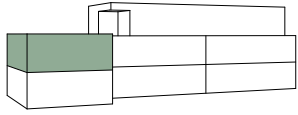
Masstab 1:100



BSTGARTEN

immoARTE AG | Weierstrasse 1 | CH-8712 Stäfa | T +41 44 927 12 11 | www.obstgartenstäfa.ch

Mietwohnungen Obstgarten | Grundstrasse 46, 48, 50, 52 | Stäfa

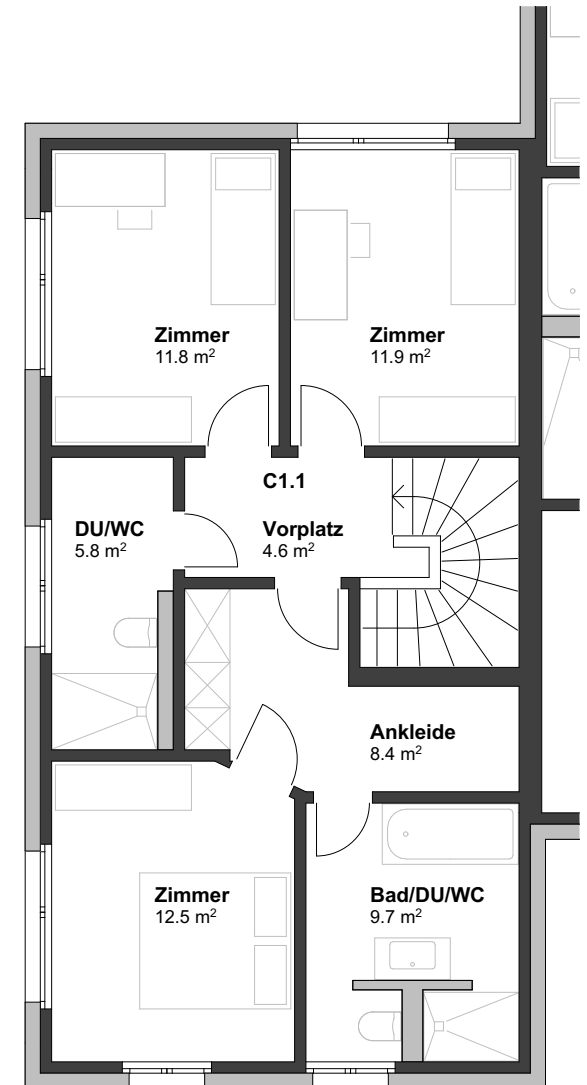
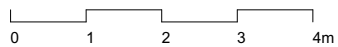


GRUNDSTRASSE 46
EFH 1. OBERGESCHOSS

| | |
|--------------|---------------------|
| EFH Süd Nr. | C1.1 |
| Zimmer | 5 1/2 |
| Wohnfläche | 140.0m ² |
| Balkon | 32.5m ² |
| Gartenanteil | 468.5m ² |



Masstab 1:100



BSTGARTEN

immoARTE AG | Weierstrasse 1 | CH-8712 Stäfa | T +41 44 927 12 11 | www.obstgartenstäfa.ch

Mietwohnungen Obstgarten | Grundstrasse 46, 48, 50, 52 | Stäfa